

10  
THOUSAND  
SUNS

9 march–10 june 2024

24TH  
BIENNALE  
OF  
SYDNEY

Exhibition Guide

FEEL  
SOMETHING  
THAT STAYS

WITH YOU

📍 Sydney Harbour



[sydney.com](http://sydney.com)

feel new sydney

## MESSAGE FROM THE NSW MINISTER FOR THE ARTS

Combining the old and new in its 50th year, the Biennale of Sydney is staging contemporary art in one of our most historic buildings – the White Bay Power Station. The Biennale continues Sydney's contribution to the international contemporary art dialogue between artists and audiences.

It is a stunning edition. Over three months, the 24th Biennale of Sydney presents a free program

of innovative contemporary art, showcasing 96 exceptional Australian and international artists and introducing audiences to the city's newest exhibition spaces with the exciting debut of the White Bay Power Station and the recently refurbished Artspace at The Gunner in Woolloomooloo.

**The Hon. John Graham,  
Minister for the Arts**

## MESSAGE FROM THE LORD MAYOR OF SYDNEY

Art plays an enormous part in the life of any great city. It can engage and stimulate, it can provoke both thought and action, it can add depth, texture and meaning to urban experience.

The Biennale of Sydney is one of the world's leading contemporary art events, showcasing local and international artists and a real highlight of our cultural calendar.

Best of all it's free and with family events there is something for everyone, across six iconic Sydney locations, including the heritage-listed White Bay Power Station – so I encourage everyone to come and experience all the Biennale has to offer!

**Clover Moore,  
Lord Mayor of Sydney**



# THE ARTISTS

Adebunmi Gbadebo  
 Agnieszka Kurant  
 Agnieszka Polska  
 Alberto Pitta  
 Andrew Thomas Huang  
 Anne Samat  
 Barrileteros Almas del Viento  
 Big Chief Demond Melancon  
 Bonita Ely  
 Breda Lynch  
 Candice Lin  
 Carrolup Child Artists:  
 Arthur Bropho,  
 Alma Cuttabut,  
 Parnell Dempster,  
 Phillip Jackson,  
 Gregory Kelly,  
 Edie Wallam,  
 and five once  
 known child artists  
 Chitra Ganesh  
 Choy Ka Fai  
 Christopher Myers  
 Christopher Pease  
 Citra Sasmita  
 Cristina Flores Pescorán  
 Darrell Sibosado  
 Dhopiya Yunupiju  
 Diane Burns  
 Doreen Chapman  
 Dr. Destiny Deacon  
 Dumb Type  
 Dylan Mooney  
 Eisa Jocson  
 El Gran Mono  
 Elyas Alavi  
 with Hussein Shirzard;  
 Jim Hinton;  
 John Hinton;  
 and Alibaba Awrang  
 Eric-Paul Riege

Felix de Rooy  
 Francisco Toledo  
 Frank Bowling  
 Frank Moore  
 Freddy Mamani  
 Gordon Hookey  
 Hayv Kahraman  
 I Gusti Ayu Kadek Murniasih  
 (IGAK Murni)  
 Idas Losin  
 Iratxe Jaio &  
 Klaas van Gorkum  
 Irene Chou  
 James Eseli  
 Joel Sherwood Spring  
 John Pule  
 Josh Kline  
 Juan Davila  
 Júlia Côta & Prazeres Côta  
 Kaylene Whiskey  
 Kirtika Kain  
 Köken Ergun  
 Kubra Khademi  
 Lawrence Lek  
 Leila el Rayes  
 Li Jiun-Yang  
 Magdalena Meak  
 Mangala Bai Maravi  
 Mariana Castillo Deball  
 Marie-Claire Messouma  
 Manlanbien  
 Martin Wong  
 Maru Yacco  
 Mauroof Jameel &  
 Hamsha Hussain  
 Megan Cope  
 Ming Wong  
 Monira Al Qadiri

Nádia Taquary  
 Nikau Hindin,  
 Ebonie Fifita-Laufilitoga-Maka,  
 Hina Puamohala Kneubuhl,  
 Hinatea Colombani,  
 Kesaia Biuvanua,  
 Rongomai Grbic-Hoskins  
 Niño de Elche &  
 Pedro G. Romero  
 Orquídeas Barrileteras  
 Özgür Kar  
 Pacific Sisters  
 Pauletta Kerinaua  
 Pauline Yearbury  
 Peter Minshall  
 Petrit Halilaj & Álvaro Urbano  
 r e a  
 Robert Campbell Jnr  
 Robert Gabris  
 Rotimi Fani-Kayode  
 Rover Joolama Thomas  
 Sachiko Kazama  
 Sana Shahmuradova Tanska  
 Satch Hoyt  
 Saule Dyussenbina  
 Segar Passi  
 Sergey Parajanov  
 Serwah Attafuah  
 Simon Soon  
 Te Whā a Huna  
 Tracey Moffatt & Garry Hillberg  
 Trevor Yeung  
 Udeido Collective  
 VNS Matrix  
 Weaver Hawkins  
 Wendy Hubert  
 William Strutt  
 William Yang  
 Yangamini

# TEN THOUSAND SUNS

With the artistic direction led by Cosmin Costinaş and Inti Guerrero, the 24th Biennale of Sydney, *Ten Thousand Suns*, proposes celebration as both a method and a source of joy, inspired by legacies of collective resistance and coming together to thrive in the face of injustice. With an exhibition of contemporary art at its core, the event draws from multiple histories, voices, and perspectives, to explore connected thematic threads, from the celebration of the resurgence of First Nations technologies and knowledges, the history of Islam in Australia, to Queer resilience, and the international expression of carnival. The edition explores the atomic era, a concentrated time of climate alteration through human exploitation, within the context of today's moment of climate emergency and a refusal to concede to an apocalyptic vision of the future.

Marking the Biennale of Sydney's 50th anniversary year, this edition challenges Western fatalistic constructions of the apocalypse and embraces a necessary hopeful outlook around a possible future lived in joy, produced in common and shared widely.

A major international art festival and the largest contemporary art event of its kind in Australia, the 24th Biennale of Sydney is presented at Art Gallery of New South Wales, Artspace, Chau Chak Wing Museum at the University of Sydney, Museum of Contemporary Art Australia, Sydney Opera House, UNSW Galleries and at the iconic and recently restored White Bay Power Station.

The 2024 edition will feature 96 artists and collectives from 45 countries and territories including Aotearoa New Zealand, Australia, Brazil, Guatemala, Hong Kong, India, Indonesia, Japan, Mexico, Nigeria, Niue, Trinidad and Tobago,

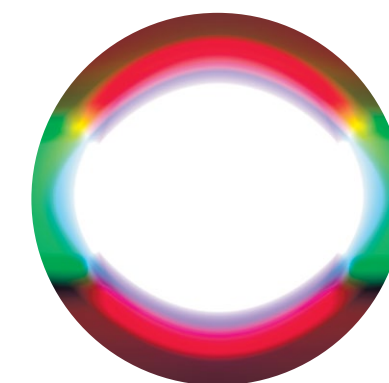
and Ukraine. Exhibiting artists have practices firmly grounded in diverse communities and artistic vocabularies.

The stretch of Country now known as Bays West has been known for millennia as Gari Gurad/Nura (Saltwater Country) and Nattai Gurad/Nura (Freshwater Country). This Country is celebrated for vast expanses of garaban (rock and sandstone) which in some places provides shelter, gibbaragunya (stone/cave shelters), and in other places creates yiningmah (steep cliffs). On the lands of the Wangal people, White Bay Power Station has long sat dormant. Open to the public for the first time in over 100 years, White Bay Power Station will host a series of talks, art activations, workshops, music and event days, set amongst the most dynamic contemporary art from across Australia and around the globe, bringing the remediated site to life. This colossal structure

symbolises the monumental efforts required to power the settler colony, both in its real and symbolic machinery.

The first of many special events including Art After Dark, Family Days and more, 'Lights On' opening night sees White Bay Power Station spark back to life, in collaboration with Phoenix Central Park. Three dancefloors, live music, food trucks, bars, installations, roving performances, all set amongst the industrial grandeur of the Station, the site will thrum with a powerful, electric festival energy.

In this dynamic interplay of history, culture, and art, a collective future emerges—one not only possible but imperative to be lived with irrepressible joy and plenitude, fostering a shared humanity. Under the gaze of *Ten Thousand Suns*, the Biennale stands as a testament to the resilience of the human spirit and the transformative power of collective expression.



Cosmin Costinaş, Barbara Moore, Chief Executive Officer of Biennale of Sydney, and Inti Guerrero. Photo by Joshua Morris



## BOOKINGS

Entry to the exhibition is free. Advanced booking or registration is not required for admission to the exhibition.

The Biennale of Sydney also presents a range of accompanying free and ticketed events.

Tickets for all events can be purchased through the Biennale of Sydney website at [biennaleofsydney.art/events](https://biennaleofsydney.art/events)

For free events, you are encouraged to register your attendance as space is limited at many locations. Priority will be given to attendees who have registered.

**ONLINE**  
Visit [biennaleofsydney.art/events](https://biennaleofsydney.art/events)

**BOX OFFICE**  
The Biennale Information Hub will be open from 11am – 6pm Tuesday – Sunday at White Bay Power Station from 9 March – 10 June 2024.

## TICKET COLLECTION

All tickets are distributed via email. You must bring your digital or print-at-home ticket for entry into the event.

## CONCESSIONS

Concession prices are available for children under the age of 16, full-time students, Australian Health Care card holder and Centrelink pension card holders. Proof of concession must be produced at events to obtain concession prices.

## BLAKTIX

Blaktix are discount tickets available for selected events for people who identify as being of First Nations descent, supporting our commitment to equity and access.

## UNWAGED TICKETS

Discounted tickets are available for unwaged members of the community.

## ACCESS

The Biennale of Sydney is striving to create a stimulating art experience for all to enjoy.

Please contact us by phone on **02 8484 8700** or email [programs@biennaleofsydney.com.au](mailto:programs@biennaleofsydney.com.au) to talk about what we can do to welcome you to the 24th Biennale of Sydney.

## COMPANION CARD

Companion Card holders qualify for a complimentary ticket for their companion.

## WHITE BAY POWER STATION

White Bay Power Station is wheelchair accessible.

There is no parking available at White Bay Power Station. We encourage visitors to catch public transport. The location is on bus route 441/442.

Wheelchairs are available to book at White Bay Power Station. To book, please email [bookings@biennaleofsydney.com.au](mailto:bookings@biennaleofsydney.com.au)

## TRANSPORT

In New South Wales, the majority of public transport services are accessible. Mobility aids including wheelchairs, scooters, walking frames, prams and strollers can safely board and travel on all metro and light rail services and most trains, buses and ferries. Assistance animals are permitted on all public transport in NSW.

To plan your trip, visit [transportnsw.info](https://transportnsw.info) and use Trip Planner. You can see accessible service information provided in every trip plan and refine your accessible trip results by choosing options and selecting the accessibility check box.

For specific information on accessibility at all Biennale locations, visit [biennaleofsydney.art/access](https://biennaleofsydney.art/access).

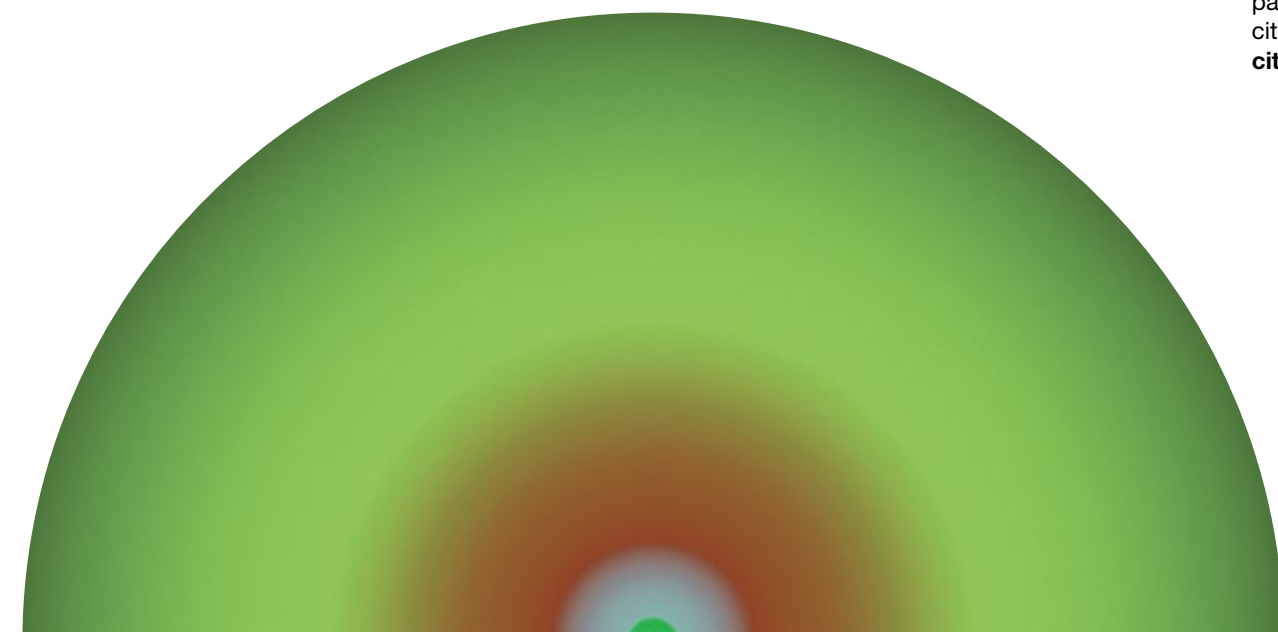
We encourage you to use public transport when travelling to and from all Biennale of Sydney locations.

There are different ways to pay for your travel on public transport in NSW.

You can use an Opal card or your contactless credit debit or mobile device to pay for travel. If you have an American Express, Mastercard or Visa debit or credit card or a linked device, you can use it to pay for travel by tapping on and tapping off at Opal readers. Just look for the contactless payment symbol. Adult Opal fare pricing applies.

If you use a credit card that was issued overseas, your card issuer may charge you a foreign transaction fee. This will be one charge per day, not each time you travel. Please check with your card issuer.

Cycling is a great way to see the Biennale of Sydney. A network of integrated cycle paths connects parts of the city. For more information, see [cityofsydney.nsw.gov.au](https://cityofsydney.nsw.gov.au).



CHARLOTTE ADIGÉRY  
& BOLIS PUPUL

HALF QUEEN

'Lights On' sees White Bay Power Station spark back to life for the opening night of the 24th Biennale of Sydney! Be amongst the first to experience contemporary art within the industrial grandeur of the Station featuring live music, dancefloors, food trucks, bars, installations and roving performances. The site will come alive with a powerful, electric festival energy.



Daily screenings from sunset, 9pm, 9.30pm, 10pm and 10.30pm.

Sydney Opera House, monumental steps

Free

**Badu Gili – meaning ‘water light’ in the language of the traditional owners of Bennelong Point, the Gadigal – is a free daily experience that explores First Nations stories in a spectacular six-minute projection on the Opera House’s eastern Bennelong sails.**

Created in partnership with Sydney Opera House and the Fondation Cartier pour l’art contemporain, the new six-minute projection features the work of Meriam artist, Gail Mabo from Mer Island in the Torres Strait, and international First Nations artist Nikau Hindin, a Te Rarawa and Ngāpuhi woman from Aotearoa/New Zealand. This nightly projection, throughout 2024, offers a magical experience that seamlessly blends art with the city’s skyline, inviting you to explore the rich storylines of First Nations’ ancient celestial navigation practices.



Photo by Billy Zammit

Phoenix Central Park is curating the program of contemporary music that is presented alongside the exhibition at White Bay Power Station, responding to the works on display and complementing *Ten Thousand Suns*. Expanding beyond its multi-award winning, architecturally celebrated home in Chippendale, Sydney, audiences will experience Phoenix’s widely-appreciated curatorial footprint to be translated to White Bay, with a line-up of bold music experiences.

Since 2021, Phoenix Central Park has presented a diverse and inclusive weekly program of local and international artists for free. In response to consistently high demand, tickets are distributed through a custom ballot system, demonstrating a commitment to reducing boundaries to bold and elevated artistic experiences.

Phoenix Central Park has quickly become one of Sydney’s most respected performance spaces, providing attendees a unique opportunity to see intimate shows from hand-picked, world-renowned artists including Sampa the Great, Jon Hopkins, Genesis Owusu, Actress, Kelly Lee Owens, John Carroll Kirby, Gordi and Courtney Barnett and more.

[phoenixcentralpark.com.au/](https://phoenixcentralpark.com.au/)





© Luc Beaugy

# Fondation *Cartier* pour l'art contemporain

The Fondation Cartier pour l'art contemporain and the Biennale of Sydney joined forces to commission 14 First Nations artists, whose artworks will be presented as part of the 24th Biennale. These artists include Mangala Bai Maravi, Doreen Chapman, Megan Cope, Cristina Flores Pescorán, Gail Mabo, Freddy Mamani, Dylan Mooney, Orquideas Barrileteras, John Pule, Eric-Paul Riege, Darrell Sibosado, Kaylene Whiskey, Yangamini, and Nikau Hindin in collaboration with Ebonie Fifita-Lauffilitoga-Maka, Hina Puamohala Kneubuhl, Hinatea Colombani, Kesaia Biuvanua and Rongomai Grbic-Hoskins.

“For more than twenty years, the Fondation Cartier has been building a long relationship with contemporary artists from Indigenous communities throughout South America. Today, it is our great pleasure to join forces with the Biennale of Sydney, our Australian partners, artists and curators to further foster dialogue between different cultures and promote public awareness of contemporary art from all over the world.

This partnership reflects our commitment to First Nations communities and underscores the crucial role of listening to their voices as we navigate the challenges of our planet. First Nations artists bring their rich cultural heritage and unique artistic creativity to the contemporary art scene challenging conventional norms in the art world.”

**Hervé Chandès**  
Fondation Cartier pour l'art contemporain  
International Director

[fondationcartier.com](http://fondationcartier.com)

Find out  
more about  
the project:



Photo by Daniel Boyd

“I am so grateful and excited to look at the year ahead as the inaugural recipient of the Sydney Biennale and the Fondation Cartier First Nations Curatorial Fellowship. Both of these organisations are visionary pioneers in showcasing and promoting incredible works of art. Indigenous Australian art has a unique identity and position within the contemporary art world. This unique and timely partnership represents a platform to expand the development of strong curatorial perimeters with First Nations peoples. In my hopes and dreams I believe that this partnership will bring outstanding commissions of Aboriginal and Torres Strait Islander art and curatorial excellence to the rest of the world.”

**Tony Albert**  
Fondation Cartier pour l'art contemporain  
First Nations Curatorial Fellow

## PROGRAM

BOOKINGS [biennaleofsydney.art/events](http://biennaleofsydney.art/events)

- KEY**
- SPOTLIGHT TALK
  - PERFORMANCE
  - PANEL
  - SPECIAL EVENT
  - NEIGHBOURHOOD FEAST
  - MUSIC
  - FILM SCREENING
  - WORKSHOP
  - TOUR

**MONDAY**  
26 FEBRUARY  
– FRIDAY  
8 MARCH

**BRITZ & MITTE**  
**PETRIT HALILAJ & ALVARO URBANO**  
Various lanes, alleys, nooks and shadows of Sydney  
Free  
“Britz & Mitte” is a performance, installation and painting work devised by the artists wearing human-size fox costumes as a point of departure.

In addition to temporary paintings and installation on display at White Bay Power Station, the work features a series of evening performances scattered across the city.

**TUESDAY**  
27 FEBRUARY

**SATCH HOYT**  
6.30 pm & 8.15 pm  
Phoenix Central Park  
Free. Register via ballot on Phoenix Central Park's website.  
Satch Hoyt, born in London of British and African-Jamaican ancestry, is currently living and working in Berlin, Germany. He makes sculptures and installations accompanied with sound, as well as paintings and drawings. For this special performance at Phoenix Central Park, Hoyt will be performing electric processed flute, acoustic flutes, acoustic and electric percussion, and spoken word.

**WEDNESDAY**  
28 FEBRUARY

**ON CYBERFEMINISM IN AUSTRALIA: VNS MATRIX WITH SODA\_JERK'S TERROR NULLIUS**  
7 pm – 9 pm  
State Library of NSW, Library Auditorium  
Josephine Starrs (VNS Matrix), Amelia Groom, Soda\_Jerk  
The term Cyberfeminism was first used in Adelaide, Australia by groundbreaking artist collective VNS Matrix. Their work and manifesto speak to the radical, queer, anti-authoritarian, democratising potential of the internet and contributed to a global movement inspiring generations of artists and theorists including VNS Matrix's official torchbearers Soda\_Jerk. Join celebrated art theorist Amelia Groom at State Library NSW in conversation with founding member of VNS Matrix Josephine Starrs, speaking to VNS Matrix's enormous career, the impact of the Cyberfeminist movement, the contemporary reality of the internet, and the continued relevance of the manifesto. After the talk there will also be a screening of works by VNS Matrix as well as Soda\_Jerk's cult hit eco-horror revenge fable *Terror Nullius*.

**THURSDAY**  
29 FEBRUARY

**SHOW US YA TIPS**  
The Abercrombie Hotel  
First Release - \$15  
Second Release - \$20  
Third Release - \$30  
Final Release - \$35  
Doors open 8 pm  
Ruby Teys, Jason De Cox, and more.  
Body and sex-positivity, dance, strut, tease and exhibitionism + Club night. Angels Only presents Show Us Ya Tips in partnership with the Biennale of Sydney, with routines by local professionals and amateurs, including select Biennale of Sydney artists, performing for tips. Alongside performances there will be DJ's all night. Bringing the queer, sex worker and local communities together.  
*No phones, no inhibitions. All love. No shame. Clothing Optional.*

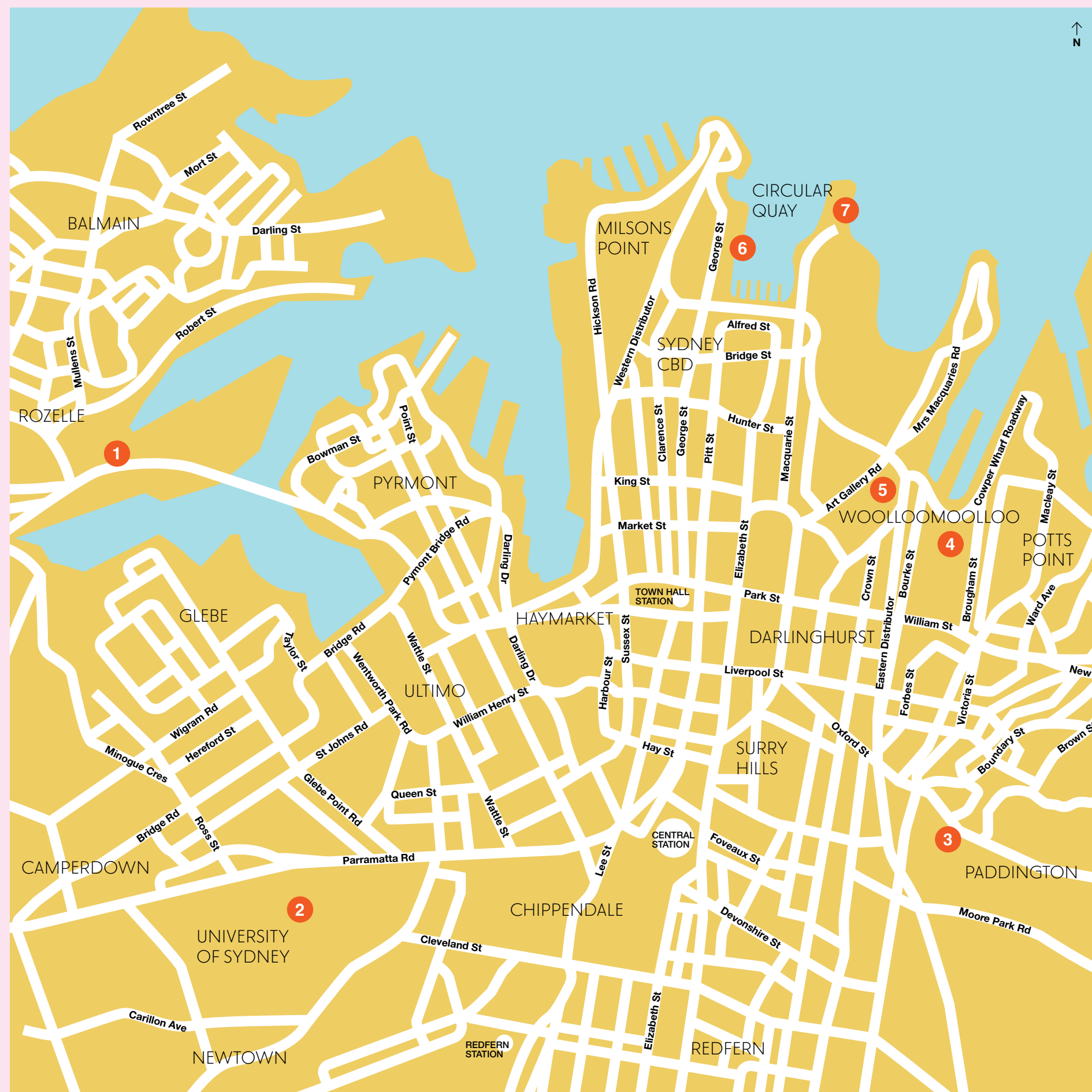
**MONDAY 4 MARCH**

**KĀNAWAPĀTĀHMŌWIN: A SYMPOSIUM ON INDIGENOUS VISUAL KNOWLEDGE**  
Co-presented by the Biennale of Sydney, and the Power Institute and Chau Chak Wing Museum at the University of Sydney  
10 am – 5 pm  
Nelson Meers Auditorium  
Chau Chak Wing Museum  
Convened by Gerald McMaster  
What does it mean to see the world through an Indigenous lens? And what role does perception play in different Indigenous languages and systems of knowledge around the world?  
Kānawapātāhmōwin, a Plains Cree word that denotes a condition of seeing and perceiving, offers one set of answers to these questions. This symposium will present others, bringing together artists and knowledge keepers for a set of lectures and conversations on the language, history and politics of Indigenous visual knowledge.

**ART TOURS**  
**WHITE BAY POWER STATION**  
11.45 am, 1.45 pm  
Every day except Mondays  
from 9 March – 10 June  
\$10 Adults,  
\$7 concession, student, senior, Black tix  
\$20 Family pack (2 adults, 2 children under 16)  
Our guided exhibition tours welcome all to experience the 24th Biennale of Sydney up close with one of our knowledgeable guides, who will be presenting up to eight major works in detail.



# EXHIBITION LOCATIONS



- 1 WHITE BAY POWER STATION**  
28 Robert St, Rozelle
- 2 CHAU CHAK WING MUSEUM AT THE UNIVERSITY OF SYDNEY**  
University Pl, Camperdown  
02 9351 2812  
sydney.edu.au/museum
- 3 UNSW GALLERIES**  
Cnr of Oxford St and Greens Rd, Paddington  
02 8936 0888  
artdesign.unsw.edu.au/  
unsw-galleries
- 4 ARTSPACE**  
The Gunny, 43/51 Cowper Wharf Roadway, Woolloomooloo  
02 9356 0555  
artspace.org.au
- 5 ART GALLERY OF NEW SOUTH WALES**  
Art Gallery Road, Sydney  
1800 679 278  
artgallery.nsw.gov.au
- 6 MUSEUM OF CONTEMPORARY ART AUSTRALIA**  
140 George St, The Rocks  
02 9245 2400  
mca.com.au
- 7 SYDNEY OPERA HOUSE**  
Bennelong Point, Sydney  
02 9250 7111  
sydneyoperahouse.com

# EXHIBITION LOCATIONS

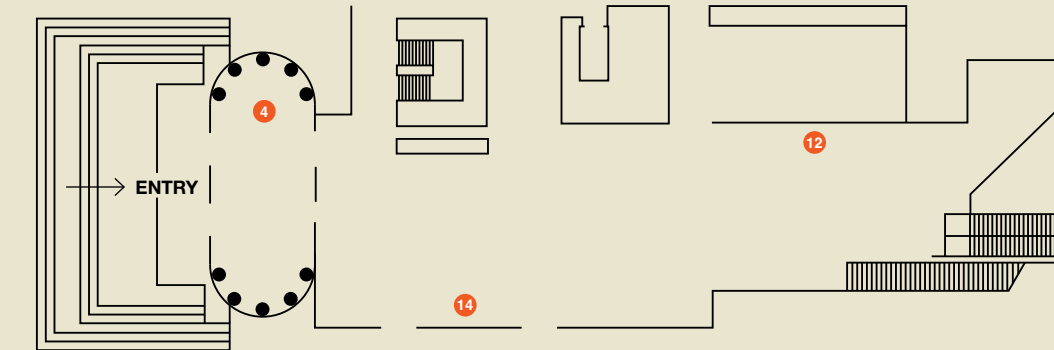
## ART GALLERY OF NEW SOUTH WALES

From its magnificent site on Sydney Harbour, on Gadigal land, the newly expanded Art Gallery of New South Wales is one of Australia's flagship art museums and the state's leading visual arts institution. The Art Gallery is located on the eastern side of Sydney's CBD, next to the Royal Botanic Garden Sydney and the Domain, and is easily accessible from St James and Martin Place stations and bus route 441. All public areas of the Art Gallery – including exhibitions, gift shops, and food and drink outlets – are physically accessible via lifts and ramps.

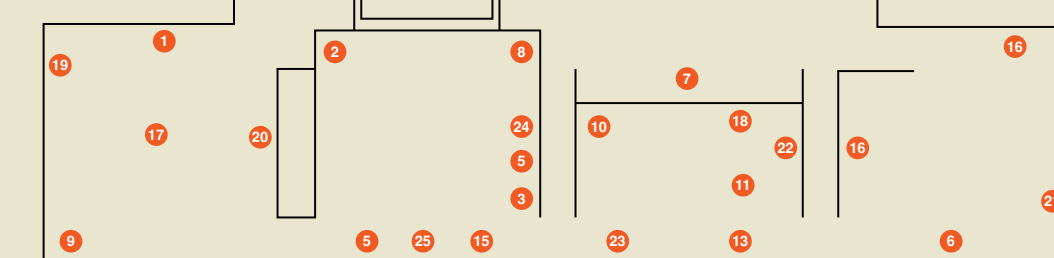
**Art Gallery Road, Sydney**  
Open daily, 10am – 5pm  
Until 10pm Wednesdays  
Closed Good Friday (29 March)  
02 9225 1744  
artgallery.nsw.gov.au

### South Building

#### Ground Floor



#### Lower Level 2



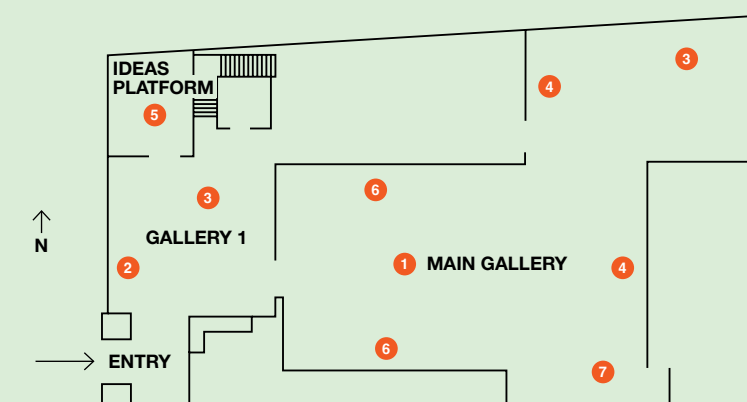
- 1 Big Chief Demond Melancon
- 2 Bonita Ely
- 3 Breda Lynch
- 4 Doreen Chapman
- 5 Eisa Jocson
- 6 Francisco Toledo
- 7 Frank Bowling
- 8 Gordon Hookey
- 9 I Gusti Ayu Kadek Murniasih (IGAK Murni)
- 10 Iratxe Jaio & Klaas van Gorkum
- 11 James Eseli
- 12 John Pule
- 13 Magdalena Meak
- 14 Maru Yacco
- 15 Ming Wong
- 16 Nádia Taquary
- 17 Pacific Sisters
- 18 Pauletta Kerinauia
- 19 Pauline Yearbury
- 20 Robert Gabris
- 21 Rotimi Fani-Kayode
- 22 Rover Joolama Thomas
- 23 Sachiko Kazama
- 24 Saule Dyussenbina
- 25 Weaver Hawkins

## ARTSPACE

Artspace is a leading institution for the production and presentation of contemporary art in the Asia-Pacific. Housed in the historic Gunny building in Woolloomooloo, Artspace is only a five-minute walk from the Art Gallery of NSW or a 15-minute walk from Kings Cross Station. Bus route 311 stops directly opposite Artspace, and there is

limited metered parking available at the Domain carpark is a short 10-minute walk away. Artspace can be assessed by wheelchairs, prams and buggies.

**43-51 Cowper Wharf Road, Woolloomooloo**  
Daily, 11 am – 5 pm  
02 9356 0555  
artspace.org.au



- 1 Adebunmi Gbadebo
- 2 Doreen Chapman
- 3 Eric-Paul Riege
- 4 Li Jiun-Yang
- 5 r e a
- 6 Sana Shahmuradova Tanska
- 7 Trevor Yeung

## CHAU CHAK WING MUSEUM AT THE UNIVERSITY OF SYDNEY

The Chau Chak Wing Museum brings three powerful collections to a stunning, purpose-built space at the University of Sydney and is open to all as a centre of cultural and artistic excellence. The Museum building sits at the

University Avenue campus entrance, off Parramatta Road. The entrance to the Museum is located on University Place, directly across from the Great Hall and Quadrangle lawns. The Museum has lift access to all levels.

**University Pl, Camperdown NSW 2050**  
Monday – Friday  
10 am – 5 pm  
Thursday until 9 pm  
Saturday and Sunday  
12 – 4 pm  
02 9351 2812  
sydney.edu.au/museum/

- 1 Carrolup Child Artists: Arthur Bropho, Alma Cuttabut, Parnell Dempster, Phillip Jackson, Gregory Kelly, Edie Wallam, and five once known child artists
- 2 Choy Ka Fai
- 3 Citra Sasmita
- 4 Diane Burns
- 5 Doreen Chapman
- 6 Juan Davila
- 7 Mangala Bai Maravi
- 8 Martin Wong
- 9 Niño De Elche & Pedro G. Romero
- 10 William Yang

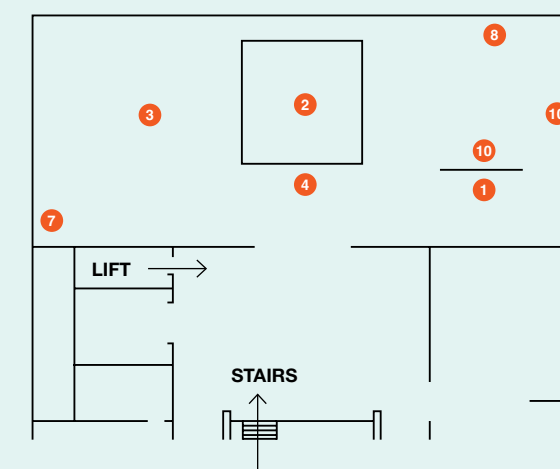
### Level 3 entry

- 5 Doreen Chapman

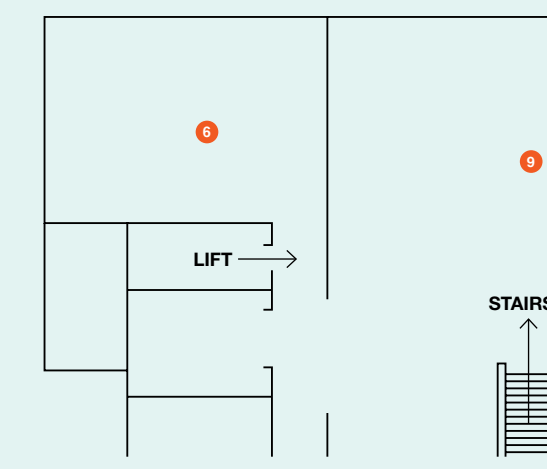
### Level 2

- 9 Niño de Elche & Pedro G. Romero

### Level 4



### Lower Ground



Subject to change



## WHITE BAY POWER STATION

### Ground Floor

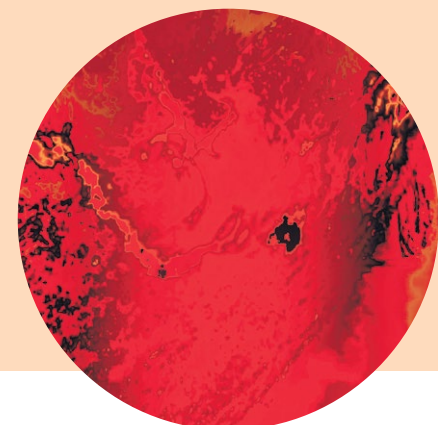
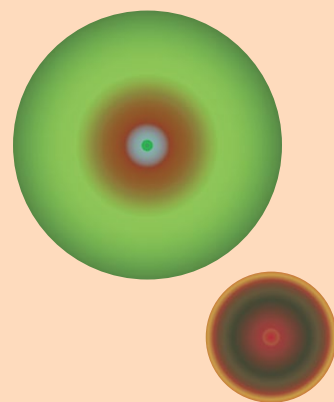


28 Robert Street, Rozelle  
NSW 2039

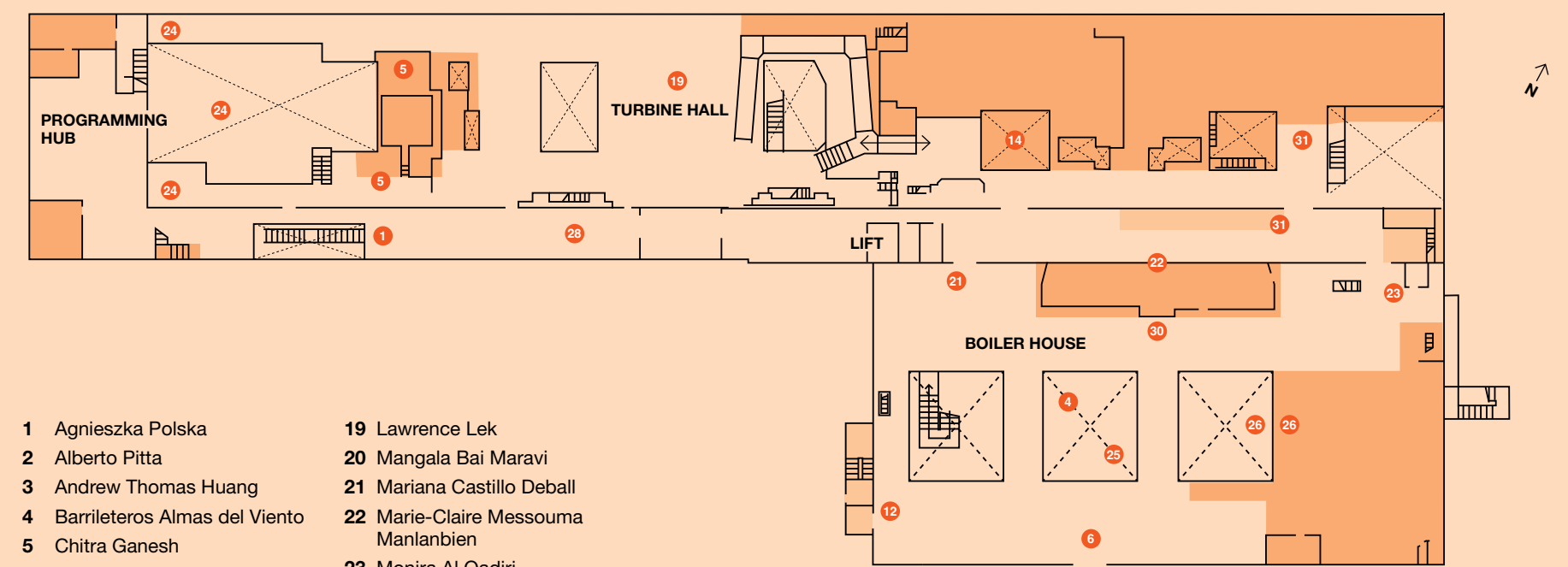
Monday Closed  
Tuesday 11 am-6 pm  
Wednesday 11 am-9 pm  
Thursday 11 am-6 pm  
Friday 11 am-6 pm  
Saturday 11 am-6 pm  
Sunday 11 am-6 pm

White Bay Power Station was constructed between 1912 and 1917 to power the rail network and is now over 100 years old, having been decommissioned in 1984. The power station is exceptionally significant as the only one retaining machinery and equipment from before the 1950s, demonstrating the process of electricity production and its use throughout Sydney's extensive rail network.

White Bay Power Station is wheelchair accessible. There is no parking available at White Bay Power Station. We encourage visitors to catch public transport. The site is on bus route 441/442.

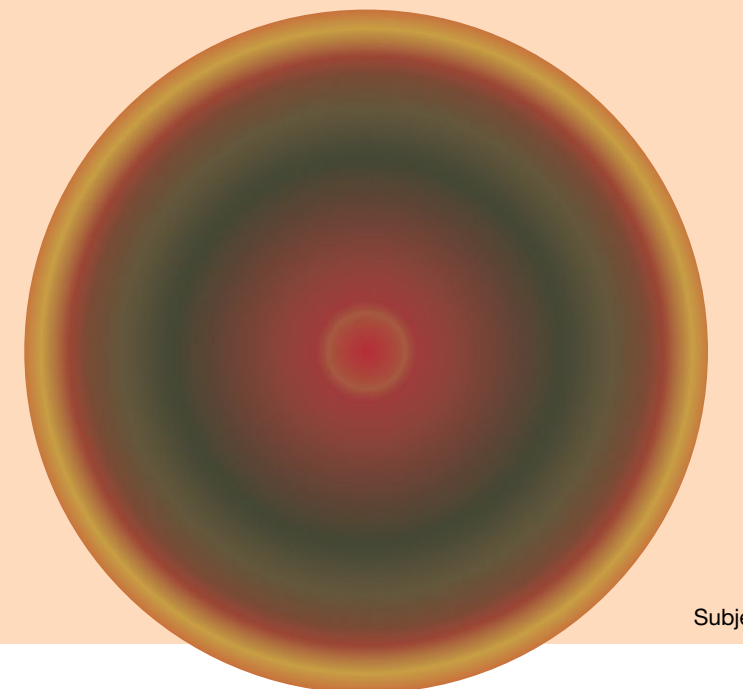


### First Floor



- |                                 |  |
|---------------------------------|--|
| 1 Agnieszka Polska              | 19 Lawrence Lek  |
| 2 Alberto Pitta                 | 20 Mangala Bai Maravi  |
| 3 Andrew Thomas Huang           | 21 Mariana Castillo Deball   |
| 4 Barrileteros Almas del Viento | 22 Marie-Claire Messouma Manlanbien  |
| 5 Chitra Ganesh                 | 23 Monira Al Qadiri  |
| 6 Christopher Myers             | 24 Nikau Hindin, Ebonie Fifita-Laufilitoga-Maka, Hina Puamohala Kneubuhl, Hinatea Colombani, Kesaia Biuvanua, Rongomal Grbic-Hoskins |
| 7 Cristina Flores Pescorán      | 25 Orquídeas Barrileteras  |
| 8 Darrell Sibosado              | 26 Özgür Kar   |
| 9 Doreen Chapman                | 27 Peter Minshall  |
| 10 Dr. Destiny Deacon           | 28 Petrit Halilaj & Álvaro Urbano  |
| 11 Dumb Type                    | 29 Satch Hoyt  |
| 12 Dylan Mooney                 | 30 Trevor Yeung  |
| 13 El Gran Mono                 | 31 VNS Matrix  |
| 14 Eric-Paul Riege              | 32 William Yang  |
| 15 Felix de Rooy                |  |
| 16 Joel Sherwood Spring         |  |
| 17 Josh Kline                   |  |
| 18 Kaylene Whiskey              |  |

- Restricted access to these areas within the Turbine Hall and Boiler House
- No access to these areas on site



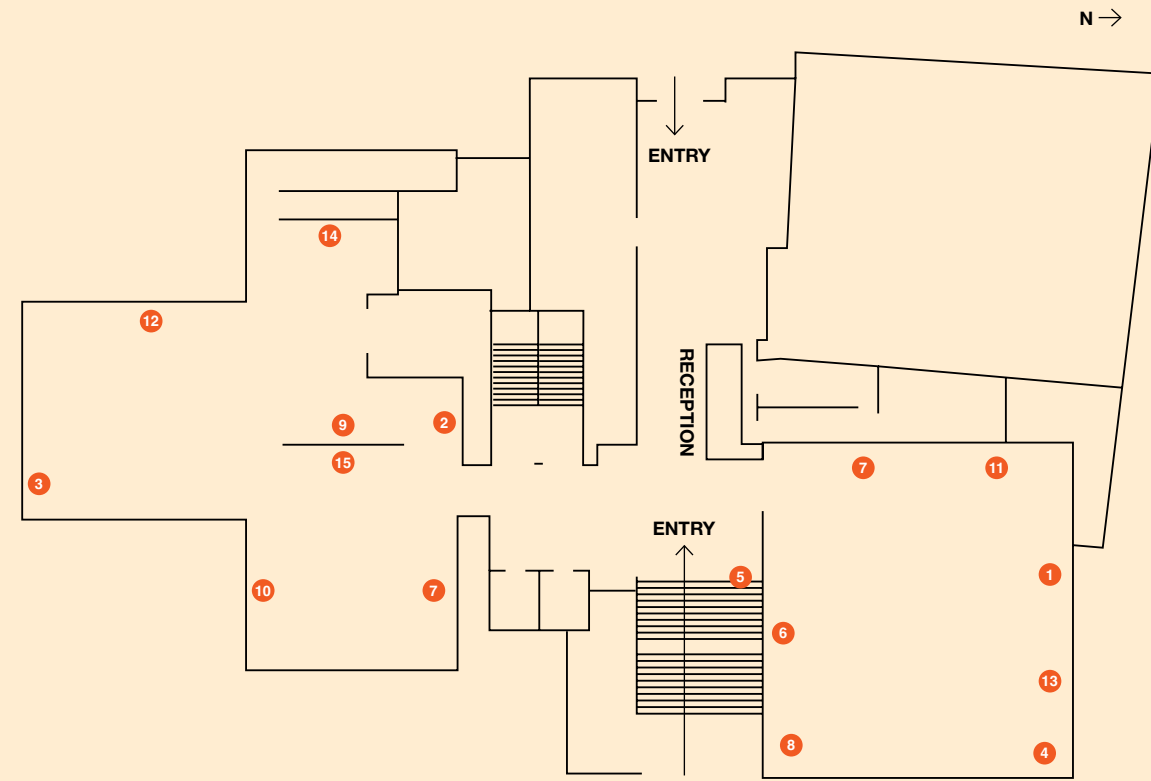
Subject to change

# EXHIBITION LOCATIONS

## MUSEUM OF CONTEMPORARY ART AUSTRALIA—

Located at Sydney's iconic Circular Quay, the Museum of Contemporary Art Australia presents, collects and engages with the art of now. MCA Australia is a three-minute walk from Circular Quay Station, which is accessible by bus, train, light rail or ferry. Entry to the Museum is via George Street or Circular Quay West. All public areas, including galleries, MCA Store and MCA Cafe are accessible via lifts.

**Tallawoladah, Gadigal Country**  
**140 George Street, The Rocks**  
**Daily, 10 am–5 pm**  
**Closed Tuesday**  
**02 9245 2400**  
**mca.com.au**



- 1 Anne Samat
- 2 Doreen Chapman
- 3 Frank Moore
- 4 Freddy Mamani
- 5 Hayv Kahraman
- 6 Irene Chou
- 7 Juan Davila
- 8 Kirtika Kain
- 9 Robert Campbell Jnr
- 10 Segar Passi
- 11 Sergey Parajanov
- 12 Serwah Attafuah
- 13 Te Whā a Huna
- 14 Tracey Moffatt & Gary Hillberg
- 15 William Strutt

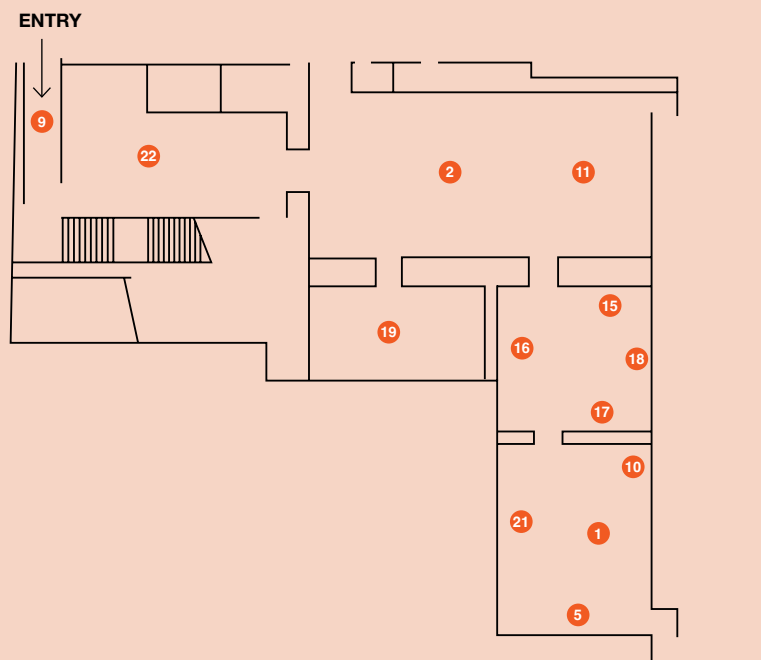
## UNSW GALLERIES

UNSW Galleries brings together the work of leading Australian and international practitioners, curators, and writers working in the fields of contemporary art and design. UNSW Galleries is located at the entrance to the UNSW Art & Design campus in Paddington, 5 minutes from the CBD of Sydney. UNSW Galleries is wheelchair accessible.

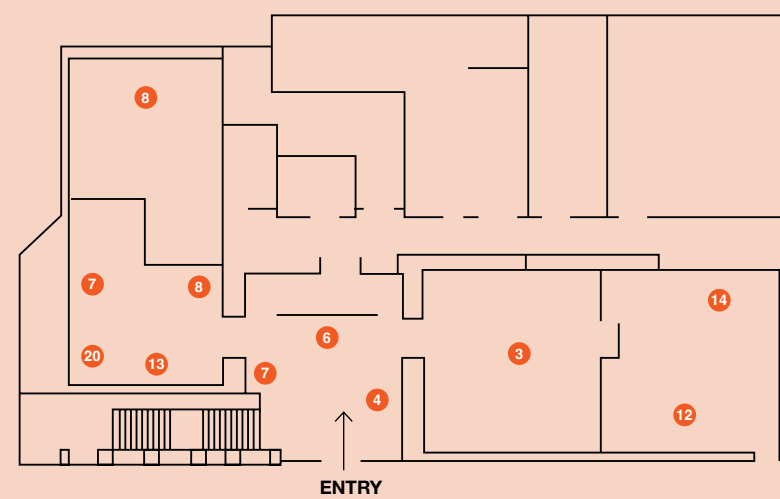
**Cnr of Oxford St and Greens Rd, Paddington NSW 2021**  
**Monday – Friday**  
**10 am – 5 pm**  
**Saturday and Sunday**  
**12 pm – 5 pm**  
**02 8936 0888**  
**artdesign.unsw.edu.au/**  
**unsw-galleries**

- |  |                                    |
|--|------------------------------------|
| 1 Agnieszka Kurant   | 11 Júlia Cóta & Prazeres Cóta      |
| 2 Agnieszka Polska   | 12 Köken Ergun                     |
| 3 Bonita Ely   | 13 Kubra Khademi                   |
| 4 Candice Lin  | 14 Leïla el Rayes                  |
| 5 Christopher Pease  | 15 Mauroof Jameel & Hamsha Hussain |
| 6 Dhopiya Yunupirju  | 16 Megan Cope                      |
| 7 Doreen Chapman   | 17 Nikau Hindin                    |
| 8 Elyas Alavi with Hussein Shirzard; Jim Hinton; John Hinton; and Alibaba Awrang | 18 Simon Soon                      |
| 9 Idas Losin   | 19 Udeido Collective               |
| 10 Joel Sherwood Spring  | 20 Wendy Hubert                    |
|  | 21 William Yang                    |
|  | 22 Yangamini                       |

### Ground Floor



### Level 1



Subject to change

# WHITE BAY POWER STATION

The NSW State Heritage-listed White Bay Power Station will soon bring new energy to Sydney and Australia as it opens its doors to the public for the 2024 Biennale of Sydney. Placemaking NSW has undertaken extensive remediation and conservation works to repurpose the site as an arts, cultural and community hub. White Bay Power Station will become a focal point for the transformation of the Bays West precinct into a connected and vibrant new area for living, working and recreation.

White Bay is part of the Balmain Peninsula in the Inner West of Sydney and is one of the most recognised landmarks in the precinct and includes surrounding lands to the White Bay foreshore. White Bay Power Station was

constructed between 1912 and 1917 to power the rail network and is now over 100 years old. The power station is exceptionally significant as the only one retaining machinery and equipment from before the 1950s, demonstrating the process of electricity production and its use throughout Sydney's extensive rail network.

The stretch of Country now known as Bays West has been known for millennia as Gari Gurad/Nura (Saltwater Country) and Nattai Gurad/Nura (Freshwater Country). This Country is celebrated for vast expanses of garaban (rock and sandstone) which in some places provides shelter, gibbaragunya (stone/cave shelters), and in other places creates yiningmah (steep cliffs).



SATURDAY  
16 MARCH

**NEIGHBOURHOOD FEASTS: COLOMBO SOCIAL**  
9.30 am – 11.30 am  
White Bay Power Station  
Free (booking required)

The 24th Biennale of Sydney's Neighbourhood Feasts program sees four partner restaurants, each with a social impact mission, present a free breakfast for 100 people at White Bay Power Station in the spirit of bread breaking and community building. Join us for a delicious Sri Lankan breakfast designed and served by the team of beloved community restaurant Colombo Social. This is no sit-down meal, but an opportunity for mingling and connecting with others.

**MORE THAN DEAD**  
2 pm – 2.45 pm  
White Bay Power Station  
\$10  
\$5 senior / concession / unwaged

A discussion reflecting on the legacy of artists both Australian and International who lived with HIV. Rejecting the perma-tragedy of an artist's passing this panel looks to rebalance the narrative of HIV/

AIDS impact on the visual art world, recognising the vitality, contribution and legacy of a cohort of artists whose lives and achievements warrant celebration. It also looks to interrelationship of art and HIV activism as something fundamentally concerned with the art of living well.

SUNDAY  
17 MARCH

**SUNDAY SCREENINGS**  
12 pm – 2 pm  
Museum of Contemporary Art Australia  
Ticketed, Book via MCA website

**Nuclear Savage, The Islands of Secret Project 4.1 (2011)**  
A heartbreaking and intimate portrait of the people of Rongelaps struggle for dignity and survival after decades of intentional radiation poisoning at the hands of the American government. Relying on recently declassified U.S. government documents, devastating survivor testimony, and incredible unseen archival footage, this untold and true detective story reveals how U.S. scientists turned a Pacific paradise into a radioactive hell. 87 minutes, Director Adam Jonas Horowitz

**Atomic Gods: Creation Myths of the Bomb (2024)**

A biting satire that is at once both historical and futuristic, this dark and hilarious story serves as a post-nuclear fairy tale. Atomic Gods centres on the story of J. Robert Oppenheimer and the birth of the atomic bomb; and features God (in a special guest appearance), Adam and Eve, Prometheus, King Kong, Charleton Heston, and Moby Dick. The film reveals previously unknown footage of the 'Atomic Gods' in a daring prison escape from Alcatraz, navigating a dream world between fact and myth, real and unreal, the surreal, and the hyperreal.

54 minutes, Director Adam Jonas Horowitz

WEDNESDAY  
20 MARCH

**ART AFTER HOURS**  
5 pm – 10 pm  
Art Gallery of New South Wales  
Free, no bookings required  
Explore the Biennale of Sydney by night in this special Art After Hours series. Through workshops, performances and tours, you'll take

a deep dive into the artistic practice and ideas in the artworks on display. See the Art Gallery's website for details.

**ART AFTER DARK: MUSIC – LUPA J | DYAN TAI**  
Doors 6.30 pm Show 7 pm – 9 pm  
White Bay Power Station  
Free. Register via ballot. 18+

Join us for a radiant evening of queer virtuosity and aesthetically rigorous electronic pop from two of Australia's most striking and performative multi-disciplinary acts.

Presented by Biennale of Sydney and Phoenix Central Park.

FRIDAY  
22 MARCH

**AUSLAN ART TOUR**  
12.15 pm – 1.15 pm  
White Bay Power Station  
Free (booking required)

The Biennale of Sydney will be offering tours for Deaf and hard of hearing audiences, delivered in Auslan, five times throughout the festival; led by deaf artist Angie Goto and interpreted into English by a NAATI Certified Auslan Interpreter.

This session is designed for traditional and digital artists, emerging and established.

SATURDAY 23  
MARCH

**ARTIST SESSIONS: ART PRACTICE AND EMERGING TECHNOLOGIES WITH JESSICA PRIEBE**  
1 pm – 4 pm  
Museum of Contemporary Art Australia

**Book via MCA website. Ticketed: \$38 members, concession; \$45 non-members**  
In this interactive session, art historian and lecturer in art and emerging technologies, Jessica Priebe, will introduce some of the ways artists can use AI, blockchain and the Metaverse to expand their practice; and provide insights into machine learning and NFT marketplaces.

Participants will be guided through digital processes including generating AI artworks and creating an immersive virtual gallery on a Metaverse platform.

This session is designed for traditional and digital artists, emerging and established.

SUNDAY  
24 MARCH

**SUNDAY SCREENING**  
The Colour of Pomegranates (1969)  
12 pm  
Museum of Contemporary Art Australia

*The Colour of Pomegranates* follows the 18th-century ashug (poet, singer) Sayat Nova from his time in Georgia's royal court, his love affair with a princess, consequent expulsion and journey across Caucasus to his death. Created in the years following filmmaker Sergey Parajanov's disavowal of social realism before his 1973 arrest under false charges. *The Colour of Pomegranates* is considered a landmark in film history.

79 minutes, Director Sergey Parajanov

**NATIVE FOOD WORKSHOP WITH THREE LITTLE BIRDS**  
1 pm – 2 pm  
White Bay Power Station  
\$30

Chef Chris will teach you about native ingredients you can incorporate into your home gardens & cooking, followed by a cooking demonstration and tastings. Using native ingredients, ancient knowledge of customs and techniques to make food that doesn't just taste good but also works to acknowledge, educate, and celebrate the unique culture and natural resources Australia has to offer.

**BOTANICAL DYES WORKSHOP WITH RETRITUS**  
3 pm – 5 pm  
White Bay Power Station  
\$30

Participants will learn how to create a natural botanical dye bundle using Australian native plants and ochre as a mordant. Participants leave with a silk bandana scarf bundle in a glass jar to keep in a sunny spot for a few weeks and the foundational knowledge of the science behind natural dyes. In this workshop Norton will talk about sustainability, the fast fashion industry, the importance of natural fibres and connection to Country.

WEDNESDAY  
27 MARCH

**ART AFTER HOURS**  
5 pm – 10 pm  
Art Gallery of New South Wales  
Free, no bookings required

Explore the Biennale of Sydney by night in this special Art After Hours series. Through workshops, performances and tours, you'll take a deep dive into the artistic practice and ideas in the artworks on display. See the Art Gallery's website for details.

**ART AFTER DARK: MUSIC – PENELOPE TRAPPES [UK] WITH BLUETUNG**  
Doors 6.30 pm Show 7 pm – 9 pm  
White Bay Power Station  
Free. Register via ballot. 18+

Phoenix is proud to host ethereal soundscaper Penelope Trappes for her second-ever performance in Sydney, having presented her debut homecoming at Phoenix Central Park. An Australian-born, Brighton-based vocalist and producer signed to esteemed East London label Houndstooth, Trappes melds powerful ambient drones and poignant post-classical melodies with reverb-drenched vocal incantations. Her sonic craft has

WEDNESDAY  
3 APRIL

**ART AFTER DARK: MUSIC – POKKIE**  
Doors 6.30 pm Show 7 pm – 9 pm  
White Bay Power Station  
Free. Register via ballot. 18+

Sultry yet bold, POKKIE is a dextrous lyricist and talented MC reclaiming her experience of blackness in Australia. Key international black influences from powerhouses including Missy Elliott shaped her musical and performance style, allowing her to find her own sense of self along the way.

Presented by the Biennale of Sydney and Phoenix Central Park.

MONDAY  
1 APRIL –  
SUNDAY  
9 JUNE

**ACCESS PROGRAMS**  
Art Gallery of NSW  
Various dates April - June 2024  
The Art Gallery of New South Wales will host a suite of programs designed to offer focused encounters with the exhibition through visual, auditory, tactile and other sensory experiences. Program highlights will include: Auslan tour and workshop, audio description and tactile tour, dedicated workshops for both children and adults, our Art and Dementia program and more. See the Art Gallery's website for details.

FAMILY DAYS NOW MAKE DREAMS COME TRUE

**WHITE BAY POWER STATION**  
11 am – 5 pm  
Free

The first of our disability led Family Days is curated by the wonderful folks of Studio A, and sees their artists take over White Bay Power Station with a series of works, participatory artworks, and performances.

Curated by Studio A

**LOVE POEM SORCERESS**  
Part-artwork-part-performance, artist, poet, performer and ultimate romantic Meaghan Pelham will entrance and delight audiences as the Love Poem Sorceress in and around her beautifully adorned love-booth. For anyone curious about their romantic future Meaghan will sense and predict their love fortune.

**WEAVING DREAMS**  
Led by performance artist and creator of ritual objects Syke Saxon and supported by weavers Damian Showyin and Adam Mandarano, Weaving Dreams is a drop-in workshop inviting audiences to contribute to a giant woven portal. Audiences will be invited to weave and knit a variety of found materials – including beads, trinkets and sparkles – into threads to be attached to the sculpture, finishing a blessing for each contribution.

**SPIN THE WHEEL AND LET'S GET READY TO RUMBLE**  
Artist and wrestling enthusiast Victoria Atkinson invites audiences to help her create a new rainbow wrestling cloak, embodied with hopes and dreams for the future. In the style of 'Wheel of Fortune' audiences will spin Victoria's 'Rainbow Wheel' which will decide the colour of a patch for Victoria's cloak, and then assist her in the decoration of patches, before the day culminates in an exhilarating wrestling performance.

**CATHERINE THE ROAMING, WISH-GRANTING ANGEL**  
Performance artist, painter and costumer Catherine McGuinness will be donning her Angel costume and rove the exhibition space offering and granting wishes to any eager being she encounters.

The Family Days for the 24th Biennale of Sydney have been developed through a guest curator model with a number of leading Disability Arts organisations and practitioners. In 2024, our Family Days will centre the work and perspectives of artists with disability, creating accessible works, performances, and installations for all audiences.

SATURDAY 23 MARCH

Image: Studio A

SATURDAY 6 APRIL,  
SUNDAY 7 APRIL

**EDGE OF INNER WEST**

**FUTURE MOVEMENT BY SUARA INDONESIA DANCE & JACK WARDANA**  
(exact times TBC)  
White Bay Power Station  
Free  
A series of choreographic labs in traditional Indonesian body percussion, contemporary and street dance, led by Sydney's leading Indonesian dance company, alongside renowned Popping dance-style teacher and performer Jack Wardana. By using the features of the space, performers and participants will adapt, create and perform a piece reflecting on the past and traditional practice to comprehend, shape and make way for a future of sharing and storytelling through movement.

**HIVE OF INDUSTRY BY LEGS ON THE WALL**  
(exact times TBC)  
White Bay Power Station  
Free  
Hive of Industry is a new work by Legs on the wall in 2024 responding to the industrial nature of White Bay Power Station, and its history as a key part of the city's electrical grid. Hive Of Industry will consist of a fusion of aerial performers and world – class riggers using a series of large pulleys, chains and other objects to enable a performance that stretches from floor to roof, which is more than 35 metres in elevation.

**POWER BY FORCE MAJEURE**  
(exact times TBC)  
White Bay Power Station  
Free  
Utilising a blend of storytelling, movement and sound, POWER breathes life into the cavernous spaces of White Bay. Initiated by three roving performers weaving through the crowd, the ensemble then converges for a choreographed spectacle of evolving live dance and sound.

**SONANT TRACES BY ELIZABETH JIGALIN & OLIVER JOHN CAMERON**  
(exact times TBC)  
White Bay Power Station  
Free  
A site – responsive music activation featuring new original compositions, with interplay between roaming choir and resonant strings. The local composers will work with the vibrant community of local choirs and amateur singers.

**ECHO BY RYUICHI FUJIMURA**  
(exact times TBC)  
White Bay Power Station  
Free  
An open durational performance piece, responding to the spirit or soul of White Bay, known as CHIREI in Japanese culture. Featuring a performing duo, the work combines dance, movement, voice, sound and improvisation.

**FIRST NATIONS WEAVING WORKSHOP BY SAMANTHA SNEDDEN**  
(exact times TBC)  
White Bay Power Station  
Free (bookings required)  
Within a warm and welcoming space, audiences drop in to share cultural knowledge through the First Nations art of weaving. Presented by a First Nations artist, and Balmain local, sharing knowledge and discussion of traditional techniques and uses of weaving.

SATURDAY 6 APRIL,  
SUNDAY 7 APRIL

Image: Brett Boardman

SATURDAY  
13 APRIL

**NEIGHBOURHOOD FEASTS: REFETTORIO**  
9.30 am – 11.30 am  
White Bay Power Station  
Free (booking required)

The 24th Biennale of Sydney's Neighbourhood Feasts program sees four partner restaurants, each with a social impact mission, present a free breakfast for 100 people at White Bay Power Station in the spirit of bread breaking and community building. Join us for a delicious breakfast designed and served by the team of beloved community restaurant Refettorio. This is no sit-down meal, but an opportunity for mingling and connecting with others.

WEDNESDAY  
17 APRIL

**ART AFTER DARK: MUSIC – RYAN FENNIS & VOIDHOOD | 700 FEEL**  
Doors 6.30 pm Show 7 pm – 9 pm  
White Bay Power Station  
Free. Register via ballot. 18+

The crossover of rap and rave is proving to be among the most vital intersections of Australian underground and this double bill of duos will surely give you a taste. Sydney-based new generation electronic duo 700 Feel, fresh off the back of their Powerhouse Museum Generations Fellowship, will perform an invigorating set that melds UK garage with hip hop, dub and house. Taking us deeper into the night will be Ryan Fennis & Voidhood. As stalwarts of Melbourne's forward-thinking CONTENT.COM.AU label, expect a performance that locates the limits of sub bass, reverb-drenched raps and gritty production.

Presented by the Biennale of Sydney and Phoenix Central Park.

WEDNESDAY  
APRIL 17 –  
SATURDAY 20  
APRIL

**APRIL SCHOOL HOLIDAYS: 24TH BIENNALE OF SYDNEY**  
Museum of Contemporary Art Australia  
Free, drop-in

Visitors of all ages are invited to imagine life in a distant future and create science-fiction inspired objects and forms of travel.

Design, assemble and decorate your creations, then add them to a collective installation inspired by Ten Thousand Suns.

MCA school holiday programs are kindly supported by The Balnaves Foundation.

SATURDAY  
20 APRIL

**AUSLAN ART TOUR**  
12.15 pm – 1.15 pm  
White Bay Power Station  
Free (booking required)

The Biennale of Sydney will be offering tours for Deaf and hard of hearing audiences, delivered in Auslan, five times throughout the festival; led by deaf artist Angie Goto and interpreted into English by a NAATI Certified Auslan Interpreter.

SATURDAY 27  
APRIL

**ARTIST SESSIONS: MATERIALITY IN PRINTMAKING WITH KIRTIKA KAIN**  
1 pm – 4 pm  
Museum of Contemporary Art Australia

Book via MCA website. Ticketed: \$38 members, concession; \$45 non-members  
Join Delhi-born, Sydney-based artist, Kirtika Kain in this hands-on discussion, based session exploring printmaking through the artist's practice of layering and focus on materiality. Participants will work on monotypes and stencilling, using their own archive of images to create unique prints. This session is designed for emerging and established artists.



Image: Joseph Mayers

WEDNESDAY 1 MAY  
THURSDAY 2 MAY  
FRIDAY 3 MAY

**WORKING CLASS CLOWN**

WHITE BAY POWER STATION  
7 pm – 7.45 pm  
Adult \$30 / Concession \$25  
Blak tik \$20 / Unwaged \$20

*Working Class Clown* is a new site-specific one-person-play by Queer Fa'afafine performance artist and playwright Tommy Misa, on the transcultural figure of the 'town fool' and their unique ability to speak truth to power.

*Working Class Clown* takes inspiration from the Samoan political satire tradition of Fale Aitu, where clowns are possessed by spirits known as Aitu, thereby conferring the spiritual authority to take the piss out of the powers that be.

Drawing on the working class history and architecture of the White Bay Power Station, the messy political drag of Sydney's yesteryear, and the tongue-in-cheek

wisdom of Tommy's late father Mefiposeta, the show honours those who entertain in the everyday workplace, home place, skool place, and more, including the classic backseat bandits of the rowdy bus network – (did you tap on?)

With this responsibility we must remember our obligation to be a voice of the people, to serve the most vulnerable amongst us. And when we tremble with fear, the

cackles of laughter and applause will balm our wounds and amour us to take another step forward and pull our silliest face; and from those twisted smiles can come a tremendous battle cry.

Join Tommy in the communion of play; undo the top button of your designer denim, let your gut sigh in relief, your wind pass, and your anger to transform into something unruly, radical and free.

**FAMILY DAYS NO.2**  
**SOFT PLACES**  
SATURDAY 4 MAY

**WHITE BAY POWER STATION**  
11 am – 4.30 pm  
Free  
The May edition of our disability led Family Days is curated by artist, facilitator and advocate Amy Claire Mills and sees Amy and a group of artists and contemporaries take over White Bay Power Station with a series of works, including an interactive installation, a participatory workshop, and a performance.  
Curated by Amy Claire Mills

**SOFT SCULPTURAL PICNIC**  
Completely transforming the White Bay Program Space, Amy Claire Mills invites audiences into a world of sensory exploration, creativity, and mindfulness with a soft sculptural picnic installation. Through a combination of textures, colours, and forms (imagine oversized flowers, fruits, sandwiches, sweet treats and more), this immersive and interactive experience invites tactile and visual engagement, creating a safe and comforting space for audiences to embrace and explore through sensory play.

**TEXTILE WORKSHOP**  
Led by artist EmmaRani Hodges, children and families will be able to drop into a textile workshop/craft station where will be given a piece of fabric and then told to recall a person, place, object, memory or action that makes them feel safe. They can then embroider, collage, paint or draw on their fabric, which will then be sewn into a quilt that grows as a communal artwork throughout the day, exploring our essential human needs and pursuit of comfort.

**ROVING PERFORMANCE**  
Dressed in joyous costumes matching the soft sculptural installation in the Program Space, artists Amy Claire Mills, EmmaRani Hodges and Bedelia Lowrenčev will together perform a lively movement piece that travels through the architecture of White Bay culminating on the Boiler House Indoor Stage.  
The Family Days for the 24th Biennale of Sydney have been developed through a guest curator model with a number of leading Disability Arts organisations and practitioners. In 2024, our Family Days will centre the work and perspectives of artists with disability, creating accessible works, performances, and installations for all audiences.

The Family Days for the 24th Biennale of Sydney have been developed through a guest curator model with a number of leading Disability Arts organisations and practitioners. In 2024, our Family Days will centre the work and perspectives of artists with disability, creating accessible works, performances, and installations for all audiences.

Photo by Document Photography

WEDNESDAY  
8 MAY

**ART AFTER DARK: MUSIC – THE EMPTY THREATS WITH PERFECT ACTRESS**  
Doors 6 pm Show 7 pm – 9 pm  
White Bay Power Station  
Free. Register via ballot. 18+

Infusing the tradition of Australian post-punk with a vibrant performativity not otherwise seen in the genre, The Empty Threats seize and hold your attention with their in-your-face performances, evoking the tradition. Their blend of genre-bending music with razor-sharp social commentary is exemplified by their no-holds-barred approach to performing.

Presented by the Biennale of Sydney and Phoenix Central Park.

THURSDAY 9 MAY

**QUEER POWERPOINT**  
7 pm – 10 pm  
White Bay Power Station  
\$25

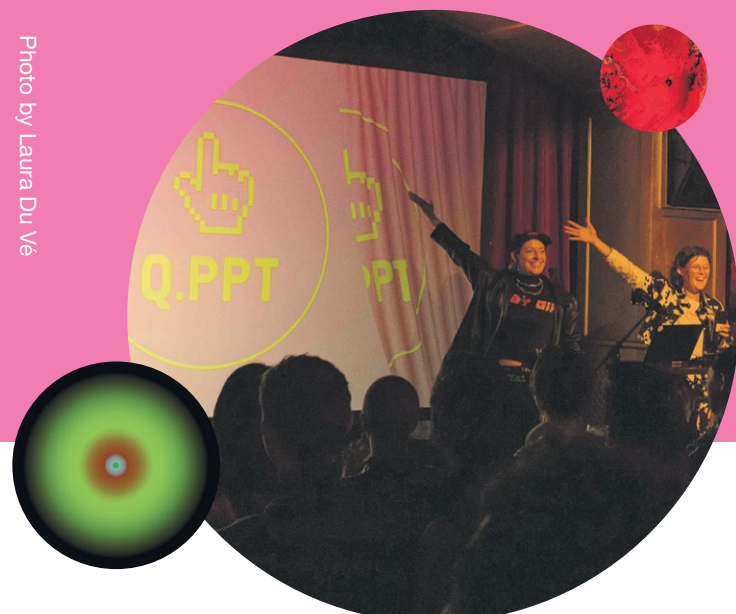
Queer PowerPoint is the cult hit experimental performance series in which Queer artists from Sydney and beyond are invited to explore and share an idea, current obsession, or ongoing fascination using that most staid and ubiquitous of programming tools – PowerPoint.

It's a bunch of queers deep diving into highly niche content in a very gay way. Reclaiming

and queering the corporate presentation from our straight capitalist overlords, creators Xanthe Dobbie and Harriet Gillies host this night of surprising stories, secret passions and starwipes; commissioning artists to create a new 10 – minute performance lecture about absolutely anything – the only rules are they have to be queer af, and they have to use Microsoft PowerPoint.

Come back together and revel in this new strangeness with a digital tool from a simpler time.

Photo by Laura Du Ve



SATURDAY  
11 MAY

**NEIGHBOURHOOD FEASTS: PARLIAMENT ON KING**  
9.30 am – 11.30 am  
White Bay Power Station  
Free (booking required)

The 24th Biennale of Sydney's Neighbourhood Feasts program sees four partner restaurants, each with a social impact mission, present a free breakfast for 100 people at White Bay Power Station in the spirit of bread breaking and community building. Join us for a delicious breakfast designed and served by the team of beloved community restaurant Parliament on King. This is no sit-down meal, but an opportunity for mingling and connecting with others.

**ON ABORIGINALIA AND ARCHIVING & WORKING WITH RACIST MATERIALS**  
11.30 am – 12.15 pm  
White Bay Power Station  
\$10

A panel discussion of artists and historians/archivists speaking to their respective practices as they pertain to the handling of Aboriginalia and historic material contributing to the subjugation of First Peoples. It

will discuss the difficult negotiation between essential truth-telling and ongoing trauma through exposure; as well as best practice when dealing with such materials and anti-colonial archiving and historiography.

WEDNESDAY  
15 MAY

**ART AFTER DARK: MUSIC – YL HOOI & SILZEDREK**  
Doors 6.30 pm Show 7 pm – 9 pm  
White Bay Power Station  
Free. Register via ballot. 18+

Enter the sonic world of Valya Ying-Li Hooi, aka YL Hooi and you will find yourself immersed in a mystical, dream-like haze. Hooi's dub-inflected downtempo, constructed with bass guitar, synth and trumpet drones is entirely unique, resolved by her elegant but vocals. Joining her is the project of collaborator Tarquin Manek known as Silzedrek, which he conceived to explore clarinet and bass clarinet in a live setting utilising the Eastern European and Roma sonorities of the artist's heritage.

Presented by the Biennale of Sydney and Phoenix Central Park.

FRIDAY 17 MAY

**AUSLAN ART TOUR**  
 12.15 pm – 1.15 pm  
**White Bay Power Station**  
 Free (booking required)  
 The Biennale of Sydney will be offering tours for Deaf and hard of hearing audiences, delivered in Auslan, five times throughout the festival; led by deaf artist Angie Goto and interpreted into English by a NAATI Certified Auslan Interpreter.

WEDNESDAY  
 22 MAY

**ART AFTER DARK:**  
**MUSIC – RORY J S / TROTH**  
 Doors 6.30 pm Show 7 pm – 9 pm  
**White Bay Power Station**  
 Free. Register via ballot. 18+  
 A double bill that teeters on the edges of the ambient, experimental and the lyrical, Rory J S (of sophisti – pop ensemble Honey 2 Honey) and Troth are two fixtures of the Australian DIY scene worthy of your time.  
 Presented by the Biennale of Sydney and Phoenix Central Park.

FAMILY  
 DAYS  
 NO ONE  
 THRIVING  
 ENVIRONMENTS



Image: We Are Studios

**WHITE BAY POWER STATION**  
 11 am – 5 pm  
 Free  
 The June edition of the disability led Family Days is curated by We Are Studios and will see their artists take over White Bay Power Station with a series of works, participatory artworks, and performance tours  
 Curated by  
**WE ARE STUDIOS**

SATURDAY 1 JUNE

**FUTURE FLOWERS**  
 Artists Ebony Wightman and Maria Macabenta invite participants to join them in creating futuristic flowers made of recycled materials, contribute to a growing installation that will exist and grow from the unlikely spaces within the White Bay Power Station.

**CHALK MURAL**  
 Over the course of the day artists Richard J Bell and Grazia Napoletano will be building an expansive, participatory chalk mural consisting of concrete poetry (or poetry that is used to create physical shapes and designs), preferred language and coded imagery. Together they will invite children and families to participate, drawing and writing their own sections that will be integrated into the whole.

**PERFORMANCE TOURS**  
 Together artists and facilitators Miah Tito-Barratt and Rebecca Sciroli will be sharing a sensorial and kinaesthetic awareness tour, leading children and families through a performative workshop that supports people in navigating their experience, using tactile strategies to find joy and peace in their environment.  
 The Family Days for the 24th Biennale of Sydney have been developed through a guest curator model with a number of leading Disability Arts organisations and practitioners. In 2024 our Family Days will centre the work and perspectives of artists with disabilities; creating works, performances and installations suitable for children of all abilities.

SUNDAY  
 2 JUNE

**AFROFUTURISM: ART, ACTIVISM AND IDENTITY IN THE DIGITAL REALM**  
 10 am  
**This event will take place online. Book via MCA website**  
 Join artist, designer and musician Serwah Attafuah with special guests, including Lecturer in art and emerging technologies, Jessica Priebe, at a 3-D immersive virtual event exploring decentralisation, activism and collectivity in the digital realm.

SATURDAY  
 8 JUNE

**NEIGHBOURHOOD FEASTS: KABUL SOCIAL**  
 9.30 am – 11.30 am  
**White Bay Power Station**  
 Free (booking required)  
 The 24th Biennale of Sydney's Neighbourhood Feasts program sees four partner restaurants,

each with a social impact mission, present a free breakfast for 100 people at White Bay Power Station in the spirit of bread breaking and community building. Join us for a delicious Afghan breakfast designed and served by the team of beloved community restaurant Kabul Social. This is no sit-down meal, but an opportunity for mingling and connecting with others.

**AUSLAN ART TOUR**  
 12.15 pm – 1.15 pm  
**White Bay Power Station**  
 Free (booking required)  
 The Biennale of Sydney will be offering tours for Deaf and hard of hearing audiences, delivered in Auslan, five times throughout the festival; led by deaf artist Angie Goto and interpreted into English by a NAATI Certified Auslan Interpreter.



VOLUNTEER  
 AT THE  
 24TH  
 BIENNALE  
 OF SYDNEY

9 March – 10 June 2024

The Biennale of Sydney would not be possible without a community of dedicated and generous volunteers.

Volunteering is a great way to experience the Biennale of Sydney and take part in one of the key events in Australia's cultural landscape, allowing you to join Sydney's vibrant arts community and engage with cutting edge contemporary art.

If you are aged 16+ and would like to volunteer with us, please apply at [biennaleofsydney.art/get-involved/volunteer/](https://biennaleofsydney.art/get-involved/volunteer/).

**HARBOURSIDE**  
 TUMBALONG · SYDNEY  
 LUXURY APARTMENTS COMING SOON

**mrvac**

Register to find out more at [harbourside.mrvac.com/register-residential](https://harbourside.mrvac.com/register-residential)

### SCHOOL PROGRAMMING EDUCATOR LED EXPERIENCES

**WHITE BAY POWER STATION**

Every Tuesday, Wednesday and Thursday (excluding school holidays)

11.15 am, 12.15 pm, 1.45 pm  
Maximum capacity of 30 students per tour.

\$120 per booking

Education programs at the 24th Biennale of Sydney, *Ten Thousand Suns*, engage with current thinking in contemporary art practice to promote and stimulate a deeper understanding of biennials and the work of artists.

### SELF-GUIDED EXPERIENCE

**WHITE BAY POWER STATION**

Available Tuesday to Sundays.  
Maximum capacity of 40 students (1 teacher per 10 students).  
Registration required. Free.

Choose your own adventure at White Bay Power Station. Teachers can book in for a free self-guided art encounter navigating their classes with resources supplied by the Biennale of Sydney.

### SCHOOL WORKSHOP

**MUSEUM OF CONTEMPORARY ART AUSTRALIA**

School workshop fees apply, bookings required.  
See [mca.com.au/learn](https://mca.com.au/learn) for details.

After engaging with art works in the 24th Biennale of Sydney, students will be led by MCA Artist Educators through art-making activities in a pop-up workshop space. Students will be encouraged to engage with randomisation, drawing from a 'lucky-dip' of materials to create work from happy accidents and surprising connections. Workshops are available for students in years 4 to 10.

**GENERAL**

**White Bay Power Station**

Join us for a specialised exhibition experience at White Bay Power Station guided by our knowledgeable educators. Focusing on up to eight works within the exhibition, students will be led through the White Bay Power Station, participating in a rich learning environment built on reciprocal sharing and exchange, grounded in discussion and hands-on investigation. Teachers will be provided with tour resources in advance of the visit.

**SENIOR STUDENT CASE STUDY**

**White Bay Power Station**

Senior Student Case Study Tours at White Bay Power Station are specially designed for Stage 5 and 6 Visual Arts students, allowing teachers to nominate four works from a list of eight provided as pre-visit tour resources. The tour will then focus on the four nominated works in significant detail; examining the content of the work, the practice of the artist, and the making process, so as to inspire and empower students towards the construction of their major works.

Serwah Attafuah, *Creation of My Metaverse (Between this World and the Next)*, 2021. Digital 3D render, 3600 x 6000px. Supported by Sotheby's. Courtesy the artist © Serwah Attafuah

### SCHOOL PROGRAMMING—WORKSHOPS

**WHITE BAY POWER STATION**

Every Tuesday, Wednesday and Thursday (excluding school holidays)

12.15 pm  
Maximum capacity of 30 students per workshop.

\$120 per booking

**BOOKINGS [biennaleofsydney.art/learn](https://biennaleofsydney.art/learn)**

Education programs at the 24th Biennale of Sydney, *Ten Thousand Suns*, engage with current thinking in contemporary art practice to promote and stimulate a deeper understanding of biennials and the work of artists.

Our exhibition programs for Primary and Secondary students cater for all ages and abilities.

**OUR TWO WORKSHOP OFFERINGS FOR YOUR STUDENTS AT WHITE BAY POWER STATION ARE:**

**WORLDBUILDING AND CHARACTER DESIGN INSPIRED BY THE WORKS OF SERWAH ATTAFAUH**

**KITE MAKING INSPIRED BY THE WORKS OF ORQUÍDEAS BARRILETERAS**

# PUBLICATION



## TEN THOUSAND SUNS

**TEN THOUSAND SUNS**  
\$49.95

Purchase the publication at  
[biennaleofsydney.art](http://biennaleofsydney.art).

24TH  
BIENNALE  
OF  
SYDNEY

# EVENT LOCATIONS

## ART GALLERY OF NEW SOUTH WALES

**Art Gallery Rd, Sydney NSW 2000**  
**02 9225 1744 / [artgallery.nsw.gov.au](http://artgallery.nsw.gov.au)**

Monday 10 am – 5 pm  
Tuesday 10 am – 5 pm  
Wednesday 10 am – 10 pm  
Thursday 10 am – 5 pm  
Friday 10 am – 5 pm  
Saturday 10 am – 5 pm  
Sunday 10 am – 5 pm

## ARTSPACE

**The Gunny, 43-51 Cowper Wharf Roadway, Woolloomooloo NSW 2011**  
**02 9356 0555 / [artspace.org.au](http://artspace.org.au)**

Monday Closed  
Tuesday 11 am – 5 pm  
Wednesday 11 am – 5 pm  
Thursday 11 am – 5 pm  
Friday 11 am – 5 pm  
Saturday 11 am – 5 pm  
Sunday 11 am – 5 pm

## CHAU CHAK WING MUSEUM AT THE UNIVERSITY OF SYDNEY

**University Pl, Camperdown NSW 2050**  
**02 9351 2812 / [sydney.edu.au/museum](http://sydney.edu.au/museum)**

Monday 10 am – 5 pm  
Tuesday 10 am – 5 pm  
Wednesday 10 am – 5 pm  
Thursday 10 am – 9 pm  
Friday 10 am – 5 pm  
Saturday 12 pm – 4 pm  
Sunday 12 pm – 4 pm

## MUSEUM OF CONTEMPORARY ART AUSTRALIA

**140 George St, The Rocks NSW 2000**  
**02 9245 2400 / [mca.com.au](http://mca.com.au)**

Monday 10 am – 5 pm  
Tuesday Closed  
Wednesday 10 am – 5 pm  
Thursday 10 am – 5 pm  
Friday 10 am – 5 pm  
Saturday 10 am – 5 pm  
Sunday 10 am – 5 pm

## SYDNEY OPERA HOUSE

**Bennelong Point, Sydney NSW 2000**  
**02 9250 7111 / [sydneyoperahouse.com](http://sydneyoperahouse.com)**  
Everyday at sunset

## UNSW GALLERIES

**Cnr of Oxford St and Greens Rd, Paddington NSW 2021**  
**02 8936 0888 / [artdesign.unsw.edu.au/unsw-galleries](http://artdesign.unsw.edu.au/unsw-galleries)**

Monday 10 am – 5 pm  
Tuesday 10 am – 5 pm  
Wednesday 10 am – 5 pm  
Thursday 10 am – 5 pm  
Friday 10 am – 5 pm  
Saturday 12 pm – 5 pm  
Sunday 12 pm – 5 pm

## WHITE BAY POWER STATION

**28 Robert St, Rozelle NSW 2039**

Monday Closed  
Tuesday 11 am – 6 pm  
Wednesday 11 am – 9 pm  
Thursday 11 am – 6 pm  
Friday 11 am – 6 pm  
Saturday 11 am – 6 pm  
Sunday 11 am – 6 pm

# IMAGE CREDITS

**Page 5 | Cosmin Costinaş and Inti Guerrero, 24th Biennale of Sydney Artistic Directors with CEO Barbara Moore, CEO of Biennale of Sydney.**  
Photo by Joshua Morris.

**Page 8 | Render of Gail Mabo's work as part of Badu Gili: Celestial.**  
Courtesy of Sydney Opera House.

**Page 9 | Phoenix Central Park.**  
Photo by Billy Zammit.

**Page 10 | Fondation Cartier pour l'art contemporain.** © Luc Boegly

**Page 10 | Tony Albert.**  
Photo by Daniel Boud.

**Page 11 | Art After Dark, 23rd Biennale of Sydney, rivus, 2022.**  
Photo by Four Minutes to Midnight

**Page 13 | Taikoz**

**Page 13 | Yirinda.**  
Photo by Mark Crannitch.

**Page 13 | The Rubai'.**  
Photo by Christopher Snee.

**Page 19 | White Bay Power Station.**  
Photo by CBRE.

**Page 20 | Studio A artist Meagan Pelham as the Love Poem Sorceress, 2017.**  
Photo by Studio A

**Page 21 | Legs on the Wall at EDGE Green Way 2019.**  
Photo by Brett Boardman.

**Page 22 | Tommy Misa – They Took Me to a Queer Bar on September 6, 2022.**  
Photo by Joseph Mayers

**Page 23 | Xanthe Dobbie and Harriet Gillies presenting Queer Powerpoint.**  
Photo by Laura Du Vé

**Page 23 | Amy Claire Mills.**  
Photo by Document Photography

**Page 24 | We Are Studios**

**Page 24 | Volunteers on Cockatoo Island, Sydney Harbour. 21st Biennale of Sydney (SUPERPOSITION: Equilibrium & Engagement), 2018**  
Photograph: Levon Baird

**Page 26 | School Workshops, 23rd Biennale of Sydney, rivus, 2022.**  
Photo by Four Minutes to Midnight

**Page 26 | School Tours, 23rd Biennale of Sydney, rivus, 2022.**  
Photo by Four Minutes to Midnight

**Page 27 | Serwah Attafuah, Creation of My Metaverse (Between this World and the Next), 2021. Digital 3D render, 3600 x 6000px. Supported by Sotheby's.**  
Courtesy the artist © Serwah Attafuah

**Page 27 | Orquídeas Barrileteras**

# THANK YOU

## PATRONS

**FOUNDING GOVERNOR**  
Franco Belgiorno-Nettis AC CBE

**FOUNDING PATRONS**  
The Belgiorno-Nettis Family  
Transfield Holdings

**PRINCIPAL PATRON**  
The Neilson Foundation

**LUMINARIES**  
Oranges & Sardines Foundation  
Anonymous

**GOVERNORS**  
Hantomefi Foundation

**AMBASSADORS**  
Andrew Cameron AM and  
Cathy Cameron  
Ginny and Leslie Green  
The Hansen Family  
Hauser & Wirth  
Amanda and Andrew Love  
The Medich Foundation  
Vicki Olsson  
Roslyn and Tony Oxley  
Penelope Seidler AM  
Georgie and Alastair Taylor  
Wellington and Virginia Yee

**ASSOCIATES**  
Simon Chan AM Art Atrium  
A Chartwell Charitable Trust  
50th Anniversary 2024 Project  
James Lie  
Kate Mills  
Mark and Louise Nelson  
James Roth and Sue Acret  
Standish and Co by Look Print  
Turnbull Foundation  
Wardle  
Martin Wong Foundation  
Carla Zampatti Foundation

**BENEFACTORS**  
Art Jameel  
Claire Armstrong and John Sharpe  
Teresa and Andrew Biet  
Alex Bowen and Catherine Sullivan  
Natalia Ottolenghi Bradshaw  
Geoff Charnock and  
Giovanni Munoz  
José Da Silva  
Paul and Saadia Durham  
Richard and Harriett England  
Gajah Gallery  
GrantPirrie Private  
Susan Hipgrave and  
Edward Waring  
Karina Harris and Neil Hobbs  
Michael and Anna Joel  
John Kaldor  
The Knights Family Jabula  
Foundation  
Walter and Liz Lewin  
William Lim, Living Limited  
Robyn Martin-Weber  
Nanda/Hobbs Gallery  
Lisa and Egil Paulsen  
Emma Perera  
Project Eleven  
Elizabeth Ramsden  
Michelangelo and  
Lourdes Samson  
Lawrence Smith and  
Anthea Williamson  
Jennifer Stafford and  
Jon Nicholson  
Alenka Tindale  
Mercedes Villardell

**ADVOCATES**  
Matthias and Tiffany Arndt  
Greta Bertuzzo  
Cassandra Bird  
Sabine Brunckhorst  
CBD Gallery  
Amanda Choularton  
Lisa Chung  
Emilya Collier  
Paul Ferman  
Barbara Flynn  
Rick and Jan Frolich  
James Hill  
Susan Hilliard  
Mark Hughes  
Benjamin Mangold  
Dr Dominik Mersch  
Zoe Paulsen  
Irene Sniatynskij  
MARC STRAUS Gallery, NYC  
Tindall Foundation  
Anthony Vaccaro  
Maria Villa  
Anna Waldman  
Dr. Terry Wu  
Anonymous

**FINANCE, AUDIT, RISK & COMPLIANCE COMMITTEE**  
James Roth  
Convenor  
Geoffrey Cassidy  
Anne Flanagan  
Evan Kaldor  
Adelle Robinson

**ARTISTIC DIRECTOR SEARCH COMMITTEE**  
Anne Flanagan Convenor  
Tony Albert  
Dr Michael Brand  
Suzanne Cotter  
Johanna Featherstone  
Alexie Glass-Kantor  
Ruby Langton-Batty  
Barbara Moore  
José Roca  
Khaled Sabsabi

**DIGITAL & PROGRAMMING COMMITTEE**  
Evan Kaldor  
Chris Wirasinha

## STAFF

### BOARD OF DIRECTORS

**Kate Mills**  
Chairman  
**Geoffrey Cassidy**  
Deputy Chairman  
**Ruby Langton-Batty**  
Company Secretary  
**Matt Crocker**  
**Danielle Earp**  
**Johanna Featherstone**  
Co-Artistic Director  
**Anne Flanagan**  
Evan Kaldor  
**Adelle Robinson**  
James Roth  
**Khaled Sabsabi**  
Rachel Verghis  
Chris Wirasinha

### COMMITEE AND ADVISORS

**BENEFACCTION COMMITTEE**  
Johanna Featherstone  
Convenor  
Ruby Langton-Batty  
Seymour Cohen  
Emma Perera  
Khaled Sabsabi  
Lourdes Samson  
Rachel Verghis

### FINANCE, AUDIT, RISK & COMPLIANCE COMMITTEE

James Roth  
Convenor  
Geoffrey Cassidy  
Anne Flanagan  
Evan Kaldor  
Adelle Robinson

### ARTISTIC DIRECTOR SEARCH COMMITTEE

Anne Flanagan Convenor  
Tony Albert  
Dr Michael Brand  
Suzanne Cotter  
Johanna Featherstone  
Alexie Glass-Kantor  
Ruby Langton-Batty  
Barbara Moore  
José Roca  
Khaled Sabsabi

### DIGITAL & PROGRAMMING COMMITTEE

Evan Kaldor  
Chris Wirasinha

### TEAM

**Barbara Moore**  
Chief Executive Officer  
**Charlotte Galleguillos**  
Deputy Director  
**Belinda Wincote**  
Executive Assistant to the CEO  
**Cosmin Costinaş**  
Co-Artistic Director  
**Inti Guerrero**  
Co-Artistic Director  
**Tony Albert**  
Fondation Cartier pour l'art  
contemporain First Nations  
Curatorial Fellow  
**Vivian Ziherl**  
Curatorial Advisor

### EXHIBITIONS AND PRODUCTION

**Tim Barker**  
Head of Production  
**Julia Greenstreet**  
Exhibitions Manager  
**Mikhaela Rodwell**  
Exhibition Project Manager  
**Billie Phillips**  
Assistant Curator  
**Alicia Hollier**  
Exhibition Coordinator  
**Fredrika Mackenzie**  
Exhibition Coordinator  
**Zali Matthews**  
Exhibition Assistant and Artist  
Liaison  
**Deborah Jones**  
Registrar  
**Talya Aarons**  
Assistant Registrar  
**Tegan Anthes**  
Conservator  
**Sep Pourbozorgi**  
Production Manager  
**Matt Woodham**  
Operations Manager  
**Gotaro Uematsu**  
Audio Visual Projects Manager  
**Ed Horne**  
Construction Manager  
**Andy Aiken**  
Site and Safety Manager  
**Noah Bennett**  
Production and Events Coordinator  
**Seamus Heidenreich**  
Site Administrator  
**Michael Kennedy**  
Producer  
**Matt Hirst**  
Associate Producer  
**Haneen Martin**  
Programs Coordinator  
**Catherine Woolley**  
Assistant Producer  
**Aksel Nichols**  
Visitor Services Manager  
**Julia Green**  
Volunteer Coordinator  
**Lily Fenwicke**  
Front of House Coordinator

### COMMUNICATIONS

**Aishlinn McCarthy**  
Head of Communications  
**Andrew Dillon**  
Impact and Engagement Manager  
**Emma Moser**  
Marketing Coordinator  
**Erica Em**  
Digital Communications  
Coordinator  
**Jo Higgins**  
Publications Editor  
**Alana Hicks**  
Ticketing Manager

### DEVELOPMENT

**Kristin Liu**  
Grants and Advocacy Manager  
**Santy Saptari**  
Patron Engagement Manager  
**Felicia Cindyagatha**  
Development Coordinator  
**Louise Villar**  
Development Coordinator

### CORPORATE SERVICES

**Cate Peat**  
Head of Corporate Services  
**Elizabeth Nguyen**  
Finance Manager  
**Jasmine Stephens**  
Office Administrator

### INSTALLATION TEAM LEAD

**Brian Martinez**  
James Lesjak-Atton  
Nina Ambjerg-Pederson  
Sally Shaw  
Thomas Dodd  
Willia Pratt

### INSTALLERS

**Alex Latham**  
**Alfredo Racilla Sanchez**  
**Daniel Curtis**  
**Hannah Riley**  
**Jack Poppert**  
**Jaime Krausmann**  
**James Lesjak-Atton**  
**Jason Liu-Brennan**  
**Jordan Grant**  
**Karla Hayes**  
**Marguerite Carson**  
**Masayuki Miyaji**  
**Mathew Gorgula**  
**Meret McDonald**  
**Robin Janus**  
**Thandi McCallister**  
**Thomas Whelan**  
**Samuel Frank**

### PUBLIC RELATIONS

**Articulate:**  
**Kym Elphinstone**  
**Sián Davis**  
**Sasha Haughan**  
**Jasmine Hersee**  
**Claire Martin**  
**Isabel Wright**

# PARTNERS

## MAJOR GOVERNMENT PARTNERS



## VISIONARY PARTNER

Fondation *Cartier*  
pour l'art contemporain

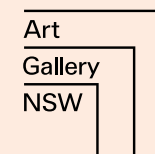
## PRINCIPAL PATRON



## PRINCIPAL PARTNER



## EXHIBITION PARTNERS



M Museum of  
C Contemporary  
A Art Australia

ARTSPACE

UNSW  
GALLERIES



CHAU CHAK WING  
MUSEUM



Placemaking NSW

## MAJOR STRATEGIC SPONSOR



## MAJOR STRATEGIC PARTNER

TERRA  
FOUNDATION FOR AMERICAN ART

## MAJOR PARTNERS

A° | Alchemy One. | BROADSHEET | dplr | INNER WEST | MinterEllison.



Panasonic



The Monthly  
The Saturday Paper  
7am



駐雪梨台北經濟文化辦事處  
Taipei Economic and Cultural Office in Sydney

## STRATEGIC PARTNERS



art  
guide  
AUSTRALIA

ARTS COUNCIL  
NEW ZEALAND TOI AOTEAROA  
creative.nz

LOVES  
DATA

MOTEL  
PICTURE COMPANY

OPEN SOCIETY  
FOUNDATIONS



## AFFILIATE PARTNERS



AON

Federal Ministry  
Republic of Austria  
Arts, Culture,  
Civil Service and Sport

CAMPARI

creative  
partnerships  
australia



FONDATION OPALE



GRIFFITH UNIVERSITY | ART MUSEUM

ife Institut für  
Auslandsbeziehungen

INSTITUT  
FRANÇAIS



MUMA

National Center for  
Art Research, Japan

Phileas  
THE AUSTRIAN OFFICE FOR  
CONTEMPORARY ART

M  
mondriaan  
fund

SAHA

Te Kapua Whakapipi

## SPECIAL THANKS

Acción Cultural Española  
British Council  
Culture Festival  
Embassy of France in Australia  
The Fundação Nacional de Artes





# TEN THOUSAND SUNS

9 march-10 june 2024

## 24TH BIENNALE OF SYDNEY

